

Prospectus



B. P. H. E. Society's

**INSTITUTE OF MANAGEMENT STUDIES
(CAREER DEVELOPMENT & RESEARCH)**

• AHMEDNAGAR •

Affiliated to S. P. Pune University & Recognized by AICTE

आय. एम्. एस्. गीत

भास्कर हा उदयासी येता
ज्ञानप्रभा पसरली....
समानतेच्या नव्या युगाची
प्रभात ही जाहलीधृ

विद्यादान हा वसा घेऊनि
ज्योत प्रांगणातूनि लाविली...
वरदान मागतो प्रभू तयासी
असावी तुझी छत्रसाऊली....१

उच्चनीच वा धर्मव्यवस्था
ना कधी आड आली.....
स्वप्नमालिका गुणीजनांची
साकार येथ जाहली ...२

चारित्र्यशीलता मंत्र मानसी
संपदा व्यक्तीमाजी दडली...
जतन कराया हा अमूल्य मोती
आत्मा हाचि होय शिंपली.... ३

विद्येलागी जो आला येथे
ठेव तिच जणू मानिली...
सर्वस्व तयासी देणे आम्ही
अंतरी खूण हीच जपली...४

सर्वोत्तम तो दर्जा राखूनि
मनुष्यबळ माला गुंफीली...
संशोधनकार्याच्या संगे
कलाश्री नित्यत्वे राखिली...५

प्रशांत गभीर या वातावरणी
जणू चांदणशाल पसरली...
तिमिर कालचा आता सरला...
पुनव शरदातील उगवली....६

भविष्य घडवू देशासाठी
पाऊले एकेक पुढती चालली...
सामाजिक या ऋणपूर्तीची
मुहुर्तमेढ इथे रचिली...७

Pioneers



Rev. Dr. Bhaskar Pandurang Hivale

(1889 - 1961)

Founder - Ahmednagar College, Ahmednagar
& Visioner under whose name B. P. H. E. Society is formed



Rev. (Prof.) J. Barnabas

(1922 - 2007)

Ex. Principal - Ahmednagar College
Ex. Secretary - B.P.H.E. Society
Founder - IMSCD&R



Mr. Philip Barnabas

(1927 - 2021)

Ex. Secretary - B.P.H.E. Society



Dr. Thomas Barnabas

(1920 - 2015)

Founder - Secretary, B.P.H.E. Society
Ex. Principal - Ahmednagar College

Contents

| S. No. | Description | Page |
|--------|--|---------|
| 1. | About B.P.H.E. Society | 1 |
| 2. | IMS - It's background | 1 - 2 |
| 3. | Institutional Achievements | 3 - 4 |
| 4. | Physical Resources, Learning Resource Centre, Research Centre Cell, Research Journal, Value Addition Programme, Counseling / Mentoring, Management Development Programme (MDP), Student Welfare Facility, Professional Society Membership, Library Membership, Language Lab, Professional Activities, International Tie-up, Skill Enhancement and Entrepreneurship Development Centre (SEEDC) Extension & Outreach Programme | 5 - 10 |
| 5. | Industry - Institute Interface Committee | 11 |
| 6. | Placement Cell, Some of the Distinguished Alumni | 12 |
| 7. | Organization Chart | 13 |
| 8. | Profile of S. P. Pune University Courses | 14 - 22 |
| 9. | Admission Quota, Fee Structure, Rules & Regulations Student's Charter, Anti Ragging Policy | 22 - 25 |

Guidance



Dr. Sanjeevan Arsud
Chairman
B.P.H.E. Society



Mr. Vishal Barnabas
Secretary
B.P.H.E. Society



Dr. M. B. Mehta
Director
IMS



Dr. Vikram P. Barnabas
Deputy Director
IMS

About B.P.H.E. Society

The Bhaskar Pandurang Hivale Education Society (B.P.H.E.S) formed in 1969 is named after the Late Dr. B. P. Hivale. Dr. Hivale established the Ahmednagar College, a pioneering Institution of its kind. It was later taken to magnificent heights by Dr. T. Barnabas and Rev. (Prof.) J. Barnabas. To its credit now stand two other Institutes : Institute of Social Work & Research (ISW&R) and Institute of Management Studies Career Development & Research (IMSCD&R). Currently, Dr. Sanjeevan Arsud - Chairman and Mr. Vishal Barnabas - Secretary of B.P.H.E. Society, are furthering this momentum of growth.

The B.P.H.E. Society is always on the lookout to offer courses which are in the new field & offer great career opportunities to the pupils, particularly of rural background.

IMS - It's background

The Bhaskar Pandurang Hivale Education (B.P.H.E.S.) Society has three Institutions under its umbrella : Ahmednagar College, Institute of Social Work & Research (ISWR) and Institute of Management Studies, Career Development & Research (IMS). Ahmednagar College, was established in 1947 by late Rev. Dr. B. P. Hivale. It was further natured by Dr. Thomas Barnabas who took the college to magnificent heights. Dr. Thomas Barnabas was followed by Rev. Prof. J. Barnabas. Rev. Prof. J. Barnabas was a dedicated educationalist, who played a key role in the field of education in Ahmednagar. In 2005, he was conferred with 'Jeevan Sadhana Gaurav Puraskar' by the University of Pune. As Secretary of B.P.H.E. Society, he was instrumental in setting up IMS in the year 1990. Dr. S. B. Kolte was the first Director of IMS.

The Bhaskar Pandurang Hivale Education (B.P.H.E.) Society's Institute of Management Studies, Career Development and Research (IMS) is a premier management institute conducting various 'Quality Programmes' in 'Management' and 'Information Technology' in Ahmednagar. IMS is affiliated to the 'Savitribai Phule Pune University', Pune and is recognized by 'All India Council for Technical Education (AICTE)', New Delhi. IMS has reputation for novel and need based courses, visionary leadership, well qualified and experienced faculty members, modern and interactive teaching methodology, state of art infrastructure, innovative student development initiatives, strong industry interface, good placements, meticulous research, meaningful consultancy, professional training, fair and transparent governance and community-oriented activities.

IMS has been Re-accredited as Grade **A+** Institute by 'National Assessment & Accreditation Council of India (NAAC)', Bengaluru. As per the exclusive survey conducted by Nationally well-known magazine 'Business Baron', November 2019, IMS Ahmednagar is ranked 25th in India's Top B-School Brands. IMS has received many prestigious awards like 'Best Institute Award' from S. P. Pune University, 'National Award for Leadership in IT Education' from 'Canon India Pvt. Ltd.', 'Best B- School Library Award' from 'Discovery Education Media - MBA by Choice', 'Most Upcoming Best B-School' award by 'ASSOCHAM', New Delhi. In 2020 the Institute received 'Certificate of Appreciation' from Maharashtra Police, Ahmednagar for the social initiative carried out during Covid - 19.



- **Vision**
"Not things but men, I dare you !"
- **Mission**
'The mission of IMSCD&R is to provide equal opportunity for quality education for students from diverse backgrounds, which will help to enrich themselves and make them responsible citizens of India and the World'.
- **Quality Policy**
'We are committed to impart to our students leading knowledge and experience for developing appropriate attitude, skills and competency to meet the corporate and organisational requirements'.

● **Organisational Values**

The Institute practices following values

Inclusive Policy

Fairness

Transparency

Secularism

Rural and Local Focus

Nation Building

Institutional Achievements

- As per the survey conducted in the year 2000 by Business Today, Ministry of HRD, Delhi and COSMODE Research. The B-School Survey was conducted jointly by 'Business Today', 'COSMODE', Hyderabad and 'H.R.D Ministry, Government of India', in 2000. In the Nov, 2000 issue of 'Business Today' the ranking of Top 100 Business Schools in the country was published. As per the survey, the Institute was given 43rd rank at National Level, 9th rank in Maharashtra and 2nd rank in the University of Pune region.
- The Institute became one of the first few educational institutes under University of Pune, to get quality certification 'ISO 9001-2000' on 26th April 2002.
- The students and faculty members of the 'IMS - Videocon Academy of Fine & Performing Arts' were blessed with a golden opportunity to perform at 'Rashtrapati Bhavan' before the Hon. President of India, Dr. A. P. J. Abdul Kalam on 8th Aug, 2006.
- The Institute received the prestigious 'Best Management Institute Award' in 'Teaching-Learning & Research' from The Educational Standards and Testing Council of India (TEST-COIN), The Global Open University Nagaland and The Confederation of Indian Universities, New Delhi in Dec, 2009.
- The Business India has rated IMS as 'A' in its B-School Survey as published in its Nov, 2009 issue.
- The Institute received the prestigious 'Best Institute Award' in Urban Category for Professional Courses by University of Pune in Feb, 2010.
- The Institute has been ranked 12th Promising Top B-School as per 'Global Human Resource Development Centre (GHRDC-CSR)' B-School Survey - 2010 published in Competition Success Review Nov, 2010 issue. The Institute is also amongst 15 'Lowest Cost of Education' B-Schools as per the said survey.
- The Institute has been ranked in India's Top 100 B-School, in 'India's Best B-school Annual Compendium' published by Dalal Street Investment Journal, in 2010.
- The Institute has been rated 'A2' as per rating of the Business Schools from West India conducted by 'All India Management Association' as published in the 'Indian Management', a Business Standard publication, Nov, 2011 issue.
- The Institute received a National Award for 'Leadership in IT Education' from Cannon India Pvt. Ltd. and Stars of the Industry Group on 13th Feb, 2012.
- The Institute has been ranked 31st among India's Top B-School Brands - 2013 as per an exclusive survey conducted by Business Barons among CEOs and senior executives, (designed to rank the brand equity of India's leading select B-Schools) 2013.
- IMS - Library has been audited externally in 2021 and has received Grade 'A' ranking. This is an exclusive audit only for library and its resources.

- Discovery Education Media Private Limited empowers the student with education opportunities and career choices. It endeavors to organize India B-School Awards to recognize the contribution of the entrepreneurs and educators in the field of management education. The IMSCD&R learning Resource Centre was awarded the B-School Library Award. Around 120 B-Schools from all over the country participated in the B-School award.
- The Institute has received 'Most upcoming B-School Award' from Associated Chambers of Commerce & Industry of India (ASSOCHAM) on 19th Feb, 2014 in ASSOCHAM National Education Summit & Excellence awards. The award was given by Padma Vibhushan Dr. Karan Singh.
- The Institute ranked 33rd in 'Beyond IIM's B-School Survey - 2014' by Higher Education Review magazine.
- The Institute has been ranked 26th among India's Top B-School Brands as per an exclusive survey conducted by Business Barons among CEOs and senior executives, (designed to rank the brand equity of India's leading select B-Schools) Nov, - Dec, 2014.
- Dr. S. B. Kolte - Former Director General of the Institute was honoured with 'Life Time Achievement Award' by Indian Subcontinent Decision Sciences Institute, New Delhi.
- The Institute participated in 23rd BSA and Dewang Mehta National Education Awards and the Institute has been awarded by 'Outstanding B-School Award' in West Region in 2015.
- Every Year Savitribai Phule Pune University conducts Magazine Competition for colleges and institutes. The Institute's magazine 'Reflections' got the 'Best Magazine', 1st Prize of Rs. 7000/- and a Trophy in 2017.
- The Institute is Re-Accredited as Grade **A+** Institute by National Assessment and Accreditation Council of India (NAAC), Bengaluru. NAAC is an autonomous institution of the University Grants Commission (UGC) which works for quality assessment and Accreditation of the higher education institutions in India. The Institute has been Re-accredited for a period of 5 years with a cumulative Grade point average (CGPA) of 3.44 out of 4 points scale at Grade **A+** valid from 16th August 2018.
- Every year Savitribai Phule Pune University conducts Magazine competition for Colleges and Institutes. The Institute's Magazine 'Reflections' got 4th prize at University Level under Professional Category. The prize was given during the program organized by University 'Yuva Sanman Sohala' on 9th February 2019. The prize include a Memento, Cash Prize of Rs. 8,000/- and a Certificate. The certificate & prize was given by the Pro-Vice-Chancellor of S. P. Pune University Dr. N. S. Umarani.
- As per the exclusive survey conducted by Nationally well-known magazine 'Business Baron', November 2019, IMS Ahmednagar is ranked 25th in India's Top B-School Brands.
- Institute received 'Emerging B-School of the Year - West Award' presented by ASSOCHAM, New Delhi during the 13th Higher Education, Skill and Livelihood Conclave : Future of Higher Education and Skill 2030. This award was given away by Dr. G. D. Sharma (Former Secretary, UGC), Dr. Mrs. Pankaj Mittal (Secretary General, Association of Indian Universities) and Dr. Prashant Bhalla (Chairman, National Council of Education) on 25th and 26th February 2020 at New Delhi.
- IMS is one of the participating Institutes in the 'National Institutional Ranking Framework (NIRF).'

Physical Resources

The Institute has a state of art physical infrastructure spread across 2.62 acres of land. The Institute has adequate infrastructural facilities for academic, co-curricular & extra-curricular activities. The Institute is housed in a four storied building accommodating 9 classrooms, 3 Tutorial rooms etc. All the computers are connected in network and have 100 mbps broadband internet facility. The Institute has generator back-up, Learning Resource Centre (Central Library), Computer Centre, 4 Computer Labs including Wi-Fi Lab and Language Lab, 3 Seminar Halls, Administration Office, Staff Room etc. The class rooms & seminar halls are equipped with teaching aids like LCD/DLP projectors, OHP with trolleys & computers with internet connection. The Institute has Girls Hostel, Boys Hostel, Rest Rooms, Canteen, Vehicle Parking facility. The Institute has adequate sports facilities. The Institute has recently constructed a new building for Skill Enhancement & Entrepreneurship Development Centre (SEEDC).

Learning Resource Centre

Achievements

The IMS - Learning Resource Centre is the recipient of the :-

- **B-School Library award 2013 for IMS, Learning Resource Centre by Discovery Education Media , New Delhi**
- **Best Non-teaching Staff award to Library personnel from S. P. Pune University.**
- **Outstanding Librarian Award 2019 by AIMS (All Indian Management Scholars)**
- **Librarian Dr. Swati Barnabas is recipient of 'Women ICONS of Ahmednagar' by Lokmat Group of papers.**
- **Librarian Dr. Swati Barnabas awarded with 'Best Librarian Award - 2023' by S. P. Pune University.**

Library staff are professionally qualified with Master's and Ph.D. degree in Library and Information Science.

Profile

The core objective of the Library is to support the academic programmes offered. The collection and services reflect the curriculum requirements and Information literacy of its user. The IMS Library is spread over the area of 457.96 Sq.mt. The set up comprises of Circulation Counter and Stacking area, Newspaper section, Extracurricular section, General Knowledge section, Research and Reference section, Librarian's cabin, Photocopying section, Journal and Periodical section, Book Bank section, CD Library, Luggage Counter and the two spacious Reading Halls along with section for Differently-abled students. It is well-lit, clean with adequate and appropriate seating arrangement. During examination period, the timings are extended on weekends and holidays.

Collection

It includes Books (printed and e-books), Journals & periodicals, Bound volumes of Journals, Corporate membership, Digital Library, DVDs & CDs, E-resources (online packages such as DELNET,N-LIST Consortia, NDLI - Club), Maps, Newspapers & Competitive Exams Magazine, Digitized Ph.D. theses, Project reports, Company reports, Talking books etc. The Resource Sharing & Document Delivery Services with local and nationalized bodies

Membership

Students are entitled to issue for three library cards for seven days, study material and Book Bank facility (Free) for a semester. Access for e-resources include online books, Journals, videos etc. Library is an Institutional member to different associations and corporate bodies. Book Club activity is encouraged during vacation period. Members can benefit the facility of inter library loan and access to e-Resources and all events of library. Clearance at the end of the academic year is mandatory.

Best Practices

Student centric and library oriented amenities (activities, facilities and services)

- AutoLib NG Library Management Software @ licensed software
- Best User Award and Essay Competition
- Book Talk Show : Author Speaks Library's flagship programme
- CD library
- Continuing Education and Information Literacy programme
- Digitization of Theses (Ph.D. theses are maintained in digitized format.)
- Electronic Visitor count detector
- Feedback of Users (Staff and Students)
- Fire Extinguisher
- ICT enabled services, viz Assistance in accessing e-resources and downloads
- Mobile charging points (FREE)
- Online Library orientation and E-resource presentation sessions
- Institutional repositories uploaded on Institute's website
- Lap Top Charging Point (Free)
- Multimedia facility and resources (CD /DVDs)
- Networking facilities
- NPTEL-Content Management System and Video Streaming Software_ LAN
- Automated circulation ungraded with Barcode technology; Online catalogue (OPAC)
- Book and Photo Exhibition
- CCTV Surveillance in Library premises
- Coloured Spine labels for resources for easy access and time saving
- Differently- abled Section equipped with headphones and speakers
- E-Book library 'Calibre' (E-resources and E-books (Digital Library Calibre)
- Extended Library hours during examination
- First aid Box
- Generator back-up for two spacious reading hall
- Bibliography compilation
- e-Newspaper sharing on Institution's Telegram Channel
- Online Essay & Elocution competition, Book Quiz, Monologue competition etc.
- Information Notification Services and Facilities
- Internet connectivity with static IP, LAN
- Maintenance of service area
- National Digital Library Club member
- N-Computing for accessing Web Resources
- Orientation and training programme Projects in PDF format

- Publications - News Articles in Local Dailies, Newsletter Reprography, Printing & Scanning facilities
- Suggestion box with timely response
- Student's Library Committee
- Subject wise arrangement of projects
- Study material set for Students and Book Bank (FREE)
- Telegram Group : eNewspaper shares such as Free Press Journal (English) and Navshakti (Marathi)
- User education and information literacy programmes
- Well-lit, clean with adequate and appropriate seating arrangement Web OPAC
- Special Purpose facilities available: JAWS software for differently-abled students.
- Social Activities like Blood Donation, Tree Plantation, and Community Service programme, Christmas Donation Drive and visitation under the banner of 'Unnat Bharat Abhiyan' and 'Fit India Movement' etc.
- University question papers issues on CDs in PDF format
- Usage Statistics Maintained
- Webinars on learning and research oriented topics on Zoom & Google Meet Platform.

Research Centre Cell

The Institute is recognized by S. P. Pune University as a Post Graduate Research Centre. The students can register for Ph.D. through the Centre and pursue their research work. The Institute has 'Systat Software' which is useful for data analysis. Research is an integral part of any educational Institute. The Institute encourages the faculty & students to undertake research activities so as to make education dynamic & meaningful.

The following are the recognised research guides in the Institute and more than 20 students are currently doing research work under them :-

Dr. M. B. Mehta

Dr. Rucha Tandulwadkar

Dr. Madhuri Godbole

Dr. Pronoti Telore

Dr. Mahesh Potadar

Dr. Rahul Khandelwal

Dr. Hatim Kayumi

Dr. Harshvardhan Bhavsar

Dr. Prashant Tambe

Research Journal

The Institute publishes a Research Journal named 'Indian Journal of Current Trends in Management Sciences'. This is a blind fold peer reviewed research journal with ISSN Registration. The Institute also publishes 'Prayas : A Student Research Publication'

Value Addition Programme

The role of management education is not only to expand knowledge horizons of the students but also to develop their overall personality and transform them into responsible corporate citizens. In this competitive era IMS goes beyond the gamut of University prescribed curriculum and conduct value addition programmes to mould the student's personality. The institute consistently conducts a variety of co-curricular and extra co-curricular activities which helps the students to enrich their experience and make them all round professionals. These courses are conducted either by our highly qualified staff or by an Industry Expert.

These courses are conducted either in summer / winter vacations or during the semester. All these courses are managed by Institute Level Courses Committee. Committee is responsible for designing & launching innovative courses for the benefit of the students, institute and society.

We offer these courses at very affordable fees and these courses are of different duration.

Some of the areas / courses being covered include :

- Course in Spoken English
- Group Discussion Skills
- Java Certification
- Oracle & Mysql
- Software Testing
- Basic Accounting
- Travel & Tourism
- Foreign Language Courses
(Japanese / French)
- Training programme for different Skill Development
- Communication Skills
- Interview Etiquettes
- Hardware & Networking
- Web Designing
- PHP
- Research Methodology
- Learning to Learn
- Personality Development
- Soft Skill Development
- Presentation Skills
- Oracle certification
- 'C' Language
- Android Programming
- Linux Operating System
- Aptitude Test
- Spoken English
- Entrepreneurship Development
- Residential Coaching

Counseling / Mentoring

A faculty is a friend, philosopher and guide of the students. Counseling and guidance is a regular activity at IMS. It is a time-tested, one of its kind programme. The objective of the Counselling activity is, to develop a faculty - student rapport, understanding the academic and personal problems students face & solving them to some extent, creating a congenial environment for learning and interaction and helping students with advice to choose the right career for themselves keeping in mind their skills. Both career and personal counseling are provided to the students. The Counseling Programme monitors the student's growth, development and performance right from the first semester till he/she passes out of the Institute.

Management Development Programme (MDP)

The Institute conducts 'Management Development Programme' for corporate managers & provides professional consultancy to business organizations to solve their problems & improve their efficiency.

Student Welfare Facility

Medical Facilities

A well equipped first aid box is provided by the institute and is available in the Administration Office, Library and Hostels. ● The Institute has a tie-up with Dr. John Ujagare for medical services. ● The Institute undertakes Medical check up of hostel students. ● There are many good hospitals located near the Institute like Booth Hospital, Patil Hospital, Anand Rishiji Hospital.

Students Insurance

The Institute extends its contribution in the Insurance provided by S. P. Pune University to the students.

Earn and Learn Scheme of S. P. Pune University

Under the scheme while pursuing education student can work in the Institute for 4 hours a day for which he/she is paid Rs. 135/- per day.

Professional Society Membership

The Institute is having membership of the following Professional Organizations :-

- One Voice Transmedia - Life Membership
- Maharashtra Chamber of Commerce, Industry & Agriculture, Pune (MCCIA)
- IMC Chamber of Commerce & Industry

National Programme on Technology Enhanced Learning (NPTEL)

IMS has been established as SWAYAM - NPTEL Local Chapter. Through this, IMS promotes Massive Open Online Courses (MOOC) conducted by NPTEL through SWAYAM platform. IMS students will benefit from this initiative as the Massive Open Online Courses offered by NPTEL are designed by faculties from IIT'S and IISc. By being local chapter, IMS faculties will be able to mentor students getting enrolled for NPTEL courses. The Institute's NPTEL local chapter ID is 3954 and the Single Point of Contact (SPOC) is Dr. Harshvardhan Bhavsar from MBA department.

Library Membership

- Indian Association of Special Libraries and Information Centre (IASLIC)
- Developing Library Network (DELNET)
- Association of Indian Management Schools (AIMS)
- Association of Indian Management Scholars - Vadodara (AIMS)
- Association of Management Development Institution in South Asia (AMDISA) 2011-2026 Life Membership
- Indian Society for Technical Education (ISTE) Life Membership
- National Library and Information Services Infrastructure for Scholarly Content (N-LIST)

Language Lab

Institute has a separate language lab. Students who want to improve English language can enrol and become proficient. Students from non English medium background are encouraged to enrol themselves in the language lab.

Professional Activities

The Institute has recognised membership of the above mentioned Professional Bodies. As such the Institute participates in the various activities conducted by the bodies. At the same time the Institute conducts tailor based Training and development activities for corporates in Ahmednagar. The Institute also conducts exams for Institute of Chartered Accountants of India / Institute of Company Secretaries of India.

International tie-up

The Institutes International tie ups and collaborations are as follows :-

- Partnership in Education with IBM for IBM AS-400
- ORACLE Workforce Development Programme
- Collaboration with IBM for IBM-Rational Software Suite
- MSDNAA : MSDN Academic Alliance with Microsoft Corporation

Skill Enhancement & Entrepreneurship Development Centre (SEEDC)

IMS took initiative in spreading the Entrepreneurial culture and Skill development in and around Ahmednagar district. Skill Enhancement & Entrepreneurship Development Centre (SEEDC) of IMS, Ahmednagar has been established with the objective of creating, fostering and promoting the spirit of entrepreneurship among the youth of the nation. This has opened gates for creation of new knowledge-based innovative hi-tech ventures and more avenues of employment opportunities thus turning job seekers into job creators and in the process, leading the nation towards industrial excellence and self-reliance. The Centre has already taken rapid strides in cultivating entrepreneurial temper, skill development and has succeeded in carving a niche for itself. The Centre has organized a plethora of events and these events have witnessed healthy participation from teachers of various schools, colleges and institutions, NGO's, existing entrepreneurs, school and college students and local communities. Various value addition programmes are conducted at SEEDC.

The success of these events has boosted our confidence and we aim to continue rolling the wheel we have set into motion. In pursuance of its goals, SEEDC has set up both short and long-term objectives.

Extension & Outreach Programme

The Institute conducts various extension and outreach programme throughout the year with the participation of students, staff and members from the society at large. These include celebration of important National Days, International Women's Day, Blood Donation Drive on Founder's day, Social Visit to different NGO's and Villages, Organizing Exhibitions etc. Students are encouraged and requested to take part in these programmes.



Industry-Institute Interface Committee

This committee has been set up comprising of CEO's, Senior Managers and Academicians from the Industry and Institutes. To groom the students for industrial requirements, the committee throws light on the skills required by the industry and helps the students in choosing their respective specialised paths. The main objective of the committee is to strengthen the relationship between the Institute and Industry.

COMMITTEE MEMBERS

• INDUSTRY •

- | | |
|---|--|
| ❖ Mr. Arvind Pargaonkar Director - Schneider Electric IT Business Pvt. Ltd. | ❖ Mr. Milind Kulkarni Director - Ankur Engineering Pvt. Ltd. |
| ❖ Mr. Anurag Dhoot CEO - Epitome Components Ltd., Ahmednagar | ❖ Mr. Ajit Thadani CEO - Retailware Software Solutions, Ahmednagar |
| ❖ Mr. Sunil Munot MD - Klassic Wheels Pvt. Ltd., Ahmednagar | ❖ Mr. Narendra Firodia Leading Industrialist, Ahmednagar |
| ❖ Mr. Meher Tiwari Onevoice Transmedia, Ahmednagar | ❖ Mr. Vijay Ingale Mayur Industries, Ahmednagar |
| ❖ Mr. Kalpesh Bhavsar Cloud Nine, Ahmednagar | ❖ Mr. Samir Patwardhan Proprietor - Aspire Moulding, Ahmednagar |
| ❖ Mr. Abhijeet Bhalgat CEO - ABMRA, Ahmednagar | ❖ Mr. Sunil Kawade Proprietor - Siddhi Stamping, Ahmednagar |
| ❖ Mr. Ashok Khandelwal Chairman - Khandelwal Gr. of Industries, A'nagar | ❖ Mr. Aniruddha Ghaisas Proprietor - Anipra Chemicals, Ahmednagar |
| ❖ Mr. Akshay Munot IT Head - I Love Nagar, Ahmednagar | ❖ Mr. Basavraj Bakali HR Head - Exide Industries, Ahmednagar |

• INSTITUTE •

- | | | |
|---|---|---|
| Dr. M. B. Mehta Director |  | Dr. Vikram P. Barnabas Deputy Director |
| Dr. Pronoti Telore Head - Management Department | | Dr. U. H. Nagarkar Head - Computer Department |
| Prof. Suresh Khanna Placement Cell | Prof. Gauri Patil MCA Placement Co-ordinator | Prof. Mudassar Sayyed MBA Department |

Placement Cell

The Institute has separate placement cell which maintains and creates bonding with the industries and also develops students and educates and nurtures them in context to placement and training activities. The institute has appointed a Training and Placement Officer (TPO) to look after the placement activities.

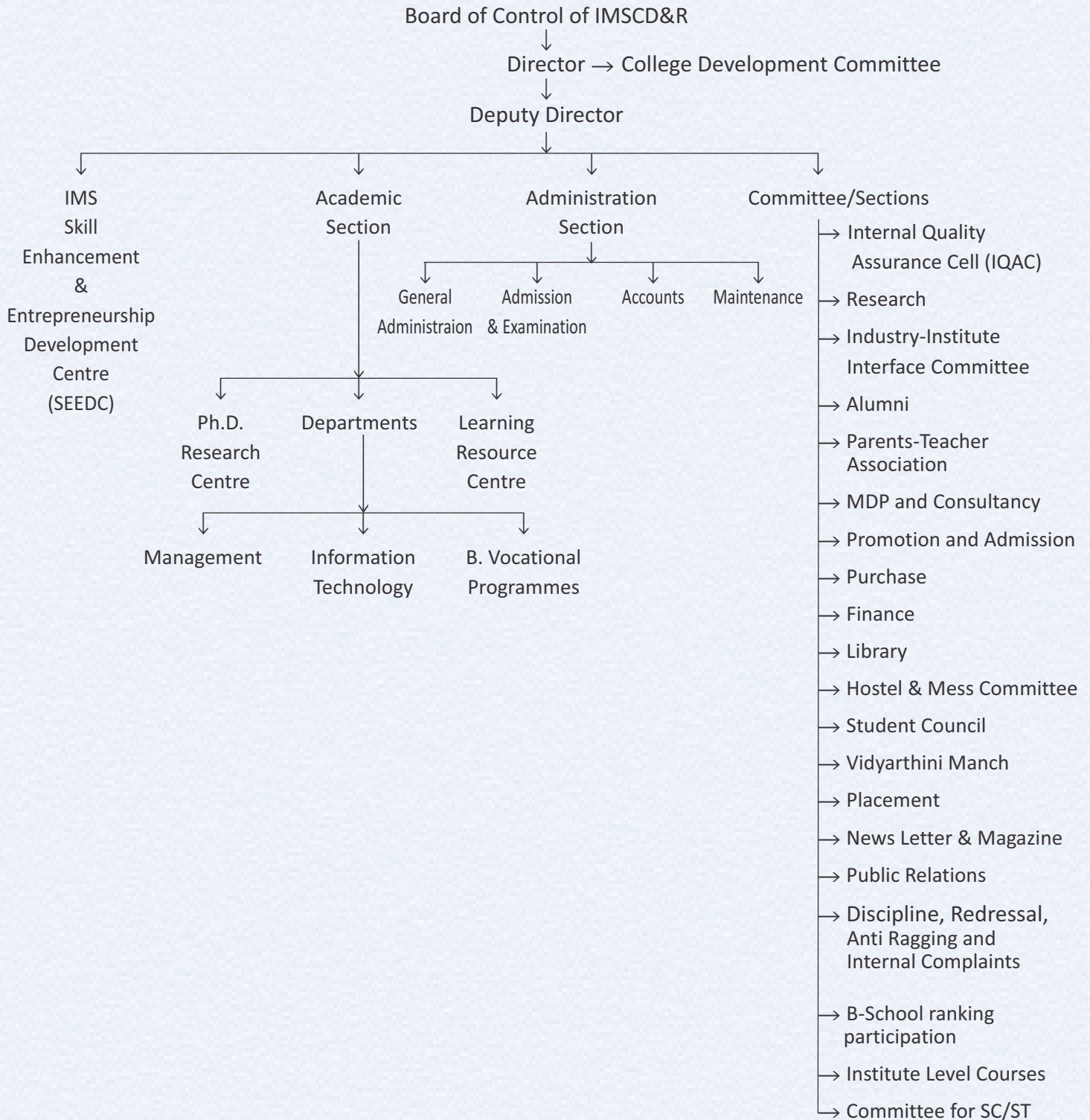
Some of our prestigious Corporate Recruiters are :-

Ujjivan Small Finance Bank, Piramal Finama, Amazon, Flipkart, Kotak Mahindra Bank, ESAF Bank, I Love Nagar, Axis Bank, American Express, Airtel, Bajaj Allianz, Crompton Greaves, HDFC Bank, Kotak Securities, TCS, IBM, Mahindra and Mahindra, Epitome Components, Klassic Wheels, Bank of New York Mellon, Syntel, Sears Holding, HOF, HOB, HDFC Securities, Superfine, Kotak Mahindra Bank, Deutsche Bank, City Bank, TATA Motors & many others.

Some of the Distinguished Alumni

- **Dr. Girish Kulkarni**
Founder - Snehalaya, Ahmednagar
- **Mr. Arvind Pargaonkar**
Joint G. M. - Larsen & Toubro Ltd., Ahmednagar
- **Mr. Mukund Deshmukh**
Head - Ahmednagar Auto
Engineering Cluster, Ahmednagar
- **Mr. Santosh Panicker**
Head (HR) - Sears Holdings, USA
- **Mr. Amol Pawar**
Senior Manager - Tata Motors Ltd., Mumbai
- **Mr. Charudatta Bhanage**
Senior Manager (IT) - Kinetic Engineering Ltd.
- **Mr. Ambadas Adhav**
Asst. Vice-president - Test Automation
- **Mr. Prasanna Deshmukh - Dhere**
System Analyst - Dubai Health Authority
- **Mr. Ashutosh Autade**
Vice-president - Accenture
- **Mrs. Deepika Nagarwala**
Principal - ICON Public School, Ahmednagar
- **Mr. Sanjeev Kumar**
Director - Accon Innovation Solution, Pune
- **Mr. Anirudha Kubair**
Vice-president - JP Morgan, UK
- **Dr. Abhijeet Mancharkar**
Director -
AISSM, Pune
- **Mr. Sangram Ghadge**
Regional Manager - Eaton, Pune
- **Mr. Atul Agarwal**
Senior Officer - Cadbury India Ltd., Ahmedabad.
- **Mr. Hrushikesh Ghotankar**
Consulting - Enterprise Architect for Data
- **Mr. Yogesh Girge**
Senior Consultant - Capgemini
- **Mr. Sushant Shetty**
Vice-president - Barclays
- **Mr. Kuntal Roy**
Vice-president (HR) - Vodafone

Organization Chart



Profile of S. P. Pune University Courses

| Sr. No. | Name of the Course | Duration | Intake |
|---------|---|----------|--------|
| 1. | BUSINESS ADMINISTRATION | | |
| 1.1 | Master of Business Administration (MBA) | 2 Years | 150 |
| 2. | COMPUTER MANAGEMENT | | |
| 2.1 | Master of Computer Application (MCA) | 2 Years | 90 |

The Institute also has AICTE & S. P. Pune University approval for conducting Bachelor of Vocation (3 Years) in Travel & Tourism and Bachelor of Vocation (3 Years) in Banking, Financial Services & Insurance.

There is a separate prospectus for the Bachelor of Vocation courses.

COURSE DETAILS

1. BUSINESS ADMINISTRATION

1.1 MASTER OF BUSINESS ADMINISTRATION (MBA)

REVISED SYLLABUS 2019

- **Duration of the course** : 2 Years - Four Semesters - Full time Programme
Choice Based Credit System (CBCS) and Grading System (GS) Outcome Based Education Pattern (OBE).
- **Programme Educational Objectives (PEOs)** :
 - **PEO1** : Graduates of the MBA program will successfully integrate core, cross-functional and inter disciplinary aspects of management theories, models and frameworks with the real world practices and the sector specific nuances to provide solutions to real world business, policy and social issues in a dynamic and complex world.
 - **PEO2** : Graduates of the MBA program will possess excellent communication skills, excel in cross functional, multi-disciplinary, multi-cultural teams, and have an appreciation for local, domestic and global contexts so as to manage continuity, change, risk, ambiguity and complexity.
 - **PEO3** : Graduates of the MBA program will be appreciative of the significance of Indian ethos and values in managerial decision making and exhibit value centered leadership.
 - **PEO4** : Graduates of the MBA program will be ready to engage in successful career pursuits covering a broad spectrum of areas in corporate, non-profit organizations, public policy, entrepreneurial ventures and engage in life-long learning.
 - **PEO5** : Graduates of the MBA program will be recognized in their chosen fields for their managerial competence, creativity & innovation, integrity & sensitivity to local and global issues of social relevance and earn the trust & respect of others as inspiring, effective and ethical leaders, managers, entrepreneurs, intrapreneurs and change agents.

- **Programme Outcomes (POs)** : At the end of the MBA programme the learner will possess the
 - **Generic and Domain Knowledge** - Ability to a reticulate, illustrate, analyze, synthesize and apply the knowledge of principles and frameworks of management and allied domains to the solutions of real world complex business issues
 - **Problem Solving & Innovation** - Ability to Identify, formulate and provide innovative solution frameworks to real world complex business and social problems by systematically applying modern quantitative and qualitative problem solving tools and techniques.
 - **Critical Thinking** - Ability to conduct investigation of multidimensional business problems using research based knowledge and research methods to arrive at data driven decisions
 - **Effective Communication** - Ability to effectively communicate in cross-cultural settings, in technology mediated environments, especially in the business context and with society at large
 - **Leadership and Team Work** - Ability to collaborate in an organizational context and across organizational boundaries and lead themselves and others in the achievement of organizational goals and optimize outcomes for all stakeholders.
 - **Global Orientation and Cross-Cultural Appreciation** - Ability to approach any relevant business issues from a global perspective and exhibit an appreciation of Cross Cultural aspects of business and management.
 - **Entrepreneurship** - Ability to identify entrepreneurial opportunities and leverage managerial & leadership skills for founding, leading & managing startups as well as professionalizing and growing family businesses .
 - **Environment and Sustainability** - Ability to demonstrate knowledge of and need for sustainable development and assess the impact of managerial decisions and business priorities on the societal, economic and environmental aspects.
 - **Social Responsiveness and Ethics** - Ability to exhibit a broad ap preciation of the ethical and value underpinnings of managerial choices in a political, cross-cultural, globalized, digitized, socio economic environment and distinguish between ethical and unethical behaviors & act with integrity.
 - **Life Long Learning** - Ability to operate independently in new environment, acquire new knowledge and skills and assimilate them into the internalized knowledge and skills.
- **Programme Specific Outcomes (PSOs)** : The PSOs for each specialization / major - minor combination varies based upon the customized combination of Generic Core, Generic Elective, Subject Core, Subject Elective, Foundation and Enrichment & Alternative Study Credit Courses that they offer. These are given in details subject wise in the CD which is part of this prospectus.

● **Graduate Attributes (GAs)** : At the end of the MBA programme the learner shall exhibit :

- GA1 : Managerial competence
- GA2 : Proficiency in Communication, Collaboration, Teamwork and Leadership
- GA3 : Competence in Creativity & Innovation
- GA4 : Research Aptitude, Scholarship & Enquiry
- GA5 : Global Orientation
- GA6 : Proficiency in ICT & Digital Literacy
- GA7 : Entrepreneurship & Intrapreneurship Orientation
- GA8 : Cross-functional & Inter-disciplinary Orientation
- GA9 : Results Orientation
- GA10 : Professionalism, Ethical, Values Oriented & Socially Responsible behaviour
- GA11 : Life-Long Learning Orientation

● **MBA Programme Course Types & Evaluation Pattern :**

| Sr. No. | Course Type | Credit | Nature | Comprehensive Concurrent Evaluation (CCE) | End Semester Evaluation (ESE) Marks | Total Marks |
|--------------------------------|---|--------|---|---|-------------------------------------|-------------|
| BASIC COURSE TYPES | | | | | | |
| 1. | Generic Core (GC) | 3 | Compulsory | 50 | 50 | 100 |
| 2. | Subject Core (SC) | 3 | Compulsory (Specialization Specific) | 50 | 50 | 100 |
| 3. | Generic Elective (GE-UL) | 2 | Elective, University Level | 00 | 50 | 50 |
| 4. | Generic Elective (GE-IL) | 2 | Elective, Institute Level | 50 | 00 | 50 |
| 5. | Subject Elective (SE-IL) | 2 | Elective (Specialization Specific) | 50 | 00 | 50 |
| 6. | Summer Internship Project (SIP) | 6 | Project (Compulsory) | 50 | 50 | 100 |
| ADDITIONAL COURSE TYPES | | | | | | |
| 1. | Enrichment Courses (ENR) | 1 | Elective | 25 | 00 | 25 |
| 2. | Foundation Courses (FOU) | 1 | Elective | 25 | 00 | 25 |
| 3. | Alternative Study Credit Courses (ASCC) | 2 | Elective | 50 | 00 | 50 |
| 4. | Open Electives (OE) | 3 or 2 | Subject Core / Subject Elective | As per Subject Core / Subject Elective Pattern | | |

- **Course Types**

- **Foundation Course** : These courses focus on developing the basic abilities that support the understanding of other courses.
- **Core courses** are the compulsory courses for all the students. Core courses are of two types : Generic Core & Subject Core.
- **Generic Core** : This is the course which should compulsorily be studied by a candidate as a core requirement to complete the requirement of a degree in a said discipline of study. Therefore, Generic Core courses are mandatory and fundamental in nature. These courses cannot be substituted by any other courses. Such courses are also known as Hard Core Courses.
- **Subject Core** : A Core course may be a Subject Core if there is a choice or an option for the candidate to choose from a broad category (grouping) of subjects (specializations / electives). These are also known as Soft Core Courses.
- **Elective Course** : Elective course is a course which can be chosen from a pool of courses. It may be :
 - Very Specialized or advanced course focusing on a specific aspect
 - Supportive to the discipline of study
 - Providing an extended scope
 - Enabling an exposure to some other discipline/domain
 - Nurturing candidate's proficiency/skills.
- **Generic Elective** : An elective course which is common across disciplines / subjects is called a generic elective. 'Generic Elective' courses develop generic proficiencies amongst the students.
- **Generic Elective - University Level** : These elective courses are supportive to the discipline of study and focus on the knowledge aspect of competence building. The course outcomes for such courses can be better assessed through traditional End Semester Evaluation.
- **Generic Elective - Institute Level** : These elective courses are aimed to develop inter -personal, technical and other skills aspect of competence building. The course outcomes for such courses can be better assessed through Comprehensive Concurrent Evaluation.
- **Subject Elective** : A 'Discipline (specialization) centric' elective is called 'Subject Elective.' Subject Elective courses, in the Semester II, III and IV are focused on a specialization.
- **Open Elective** : A subject elective course chosen generally from another Discipline / specialization / subject, with an intention to seek cross-functional exposure is called an Open Elective. A Subject Elective offered in one specialization area may be treated as an Open Elective by another specialization area and vice-a-versa.

- **Enrichment Course** : This is a course generally offered to bright learners / fast learners for advanced inputs beyond the curriculum. Enrichment / Add -on Course shall be a 1 Credit Course. The course is of the nature of Course of Independent Study (CIS) and is designed for learners who have the ability and inclination to work independently with limited guidance, supervision and interaction with the faculty member(s).
- **Alternative Study Credit Courses** : These courses prepare the learners for a VUCA (Volatile Uncertain, Complex and Ambiguous) world by going beyond the boundaries of their campus. Apart from core and elective courses, these courses engage students in discussion, debate and solution of real world challenges.
- **Massive Open Online Courses (MOOCs)** : Massive Open Online Courses (MOOCs) are such online courses which are developed as per the pedagogy stated in the AICTE regulation (2016) or equivalent; following the four quadrant approach and made available on the SWAYAM platform of Government of India.

LEGEND :

| # | Block | CIE - E (Credit per Course) | Course Type | Credits | Courses | Nature |
|---|-------|--------------------------------|--|------------|-----------|------------|
| 1.1 | A1 | 50 - 50 (3 Credits) | GENERIC CORE (GC) | 42 | 14 | COMPULSORY |
| 1.2 | A2 | 50 - 50 (3 Credits) | SUBJECT CORE (SC) | 18 | 6 | COMPULSORY |
| 1.3 | A3 | 50 - 50 (3 Credits) | PROJECT | 6 | 1 | COMPULSORY |
| 2 | B | 0 - 50 (2 Credits) | GENERIC ELECTIVE (UNIVERSITY LEVEL) GE - UL | 22 | 11 | ELECTIVES |
| 3.1 | C1 | 50 - 0 (2 Credits) | GENERIC ELECTIVE (INSTITUTE LEVEL) GE - IL | 8 | 4 | ELECTIVES |
| 3.4 | C2 | 50 - 0 (2 Credits) | SUBJECT ELECTIVE (INSTITUTE LEVEL) SE - IL | 14 | 7 | ELECTIVES |
| TOTAL | | | | 110 | 43 | |
| OPTIONAL COURSES (In Lieu of C1 / C2 ONLY) | | | | | | |
| 4.1 | D | 25 - 0 (1 Credits) | FOUNDATION COURSES | 0 - 10 | 0 - 10 | ELECTIVES |
| 4.2 | E | 25 - 0 (1 Credits) | ENRICHMENT COURSES | 0 - 14 | 0 - 14 | ELECTIVES |
| 4.3 | F | 50 - 0 (2 Credits) | ALTERNATIVE STUDY CREDIT COURSES | 0 - 22 | 0 - 11 | ELECTIVES |

Note :- The different subjects in the different Blocks are given in the CD which is part of this Prospectus.

- **Specializations offered** : The following specializations shall be offered as MAJOR / MINOR :
 - Marketing Management (MKT)
 - Financial Management (FIN)
 - Human Resources Management (HRM)
 - Operations & Supply Chain Management (OSCM)
 - Business Analytics (BA)
- **The following specializations shall be offered ONLY as MINOR Specializations** :
 - Rural & Agribusiness Management (RABM)
 - Pharma & Healthcare Management (PHM)
 - Tourism & Hospitality Management (THM)
 - International Business Management (IB)
- **MBA Programme Structure** : The Basic Programme Structure shall be as depicted below

| Course# | Semester I | Semester II | Semester III | Semester IV | Credits | CIE Marks | ESE Marks | | | | | |
|---|------------|-------------|--------------|-------------|---------|---------------|-----------|------------|---------------|----------------|-------------|-------------|
| COMPULSORY CORE COURSES (GENERIC) (GC) + SUBJECT (SC) + Internship Project (SIP) | | | | | | | | | | | | |
| A | 1 | GC - 1 | 1 | GC - 7 | 1 | GC - 11 | 1 | GC - 14 | 66 Credits | | | |
| | 2 | GC - 2 | 2 | GC - 8 | 2 | GC - 12 | 2 | GC - 15 | | | | |
| | 3 | GC - 3 | 3 | GC - 9 | 3 | GC - 13 (SIP) | 3 | SC - 5 | | | | |
| | 4 | GC - 4 | 4 | GC - 10 | 4 | SC - 3 | 4 | SC - 6 | 1050 | 1050 | | |
| | 5 | GC - 5 | 5 | SC - 1 | 5 | SC - 4 | | | | | | |
| | 6 | GC - 6 | 6 | SC - 2 | | | | | 2100 | | | |
| GENERIC ELECTIVE COURSES (UNIVERSITY LEVEL) - GE UL | | | | | | | | | | | | |
| B | 7 | GE UL - 1 | 7 | GE UL - 4 | 6 | GE UL - 7 | 5 | GE UL - 10 | 22 | 0 | 550 | |
| | 8 | GE UL - 2 | 8 | GE UL - 5 | 7 | GE UL - 8 | 6 | GE UL - 11 | | | | |
| | 9 | GE UL - 3 | 8 | GE UL - 6 | 8 | GE UL - 9 | | | Credits | 550 | | |
| GENERIC / SUBJECT ELECTIVE COURSES (INSTITUTE LEVEL) - GE - IL / SE - IL | | | | | | | | | | | | |
| C | 10 | GE IL - 1 | 10 | GE IL - 4 | 9 | SE IL - 3 | 7 | SE IL - 6 | 22 | 550 | 0 | |
| | 11 | GE IL - 2 | 11 | SE IL - 1 | 10 | SE IL - 4 | 8 | SE IL - 7 | | | | |
| | 12 | GE IL - 3 | 12 | SE IL - 2 | 11 | SE IL - 5 | | | Credits | 550 | | |
| | 12 | | 12 | | 11 | | 8 | | 43 | 110 Credits | 1600 CIE | 1600 ESE |

Note :- Detailed Syllabus of all the subjects is given in the CD which is part of this Prospectus.

2. COMPUTER MANAGEMENT

2.1 MASTER OF COMPUTER APPLICATION (MCA)

REVISED SYLLABUS 2020

- **Duration of the course** : 2 Years - Four Semesters - Full time Programme
Choice Based Credit System (CBCS) and Grading System Outcome Based Education Pattern
- **Eligibility for Admission**
The eligibility criteria for admission for the MCA course will be as decided by the Competent Authority (Director, Technical Education-Government of Maharashtra, &/or AICTE, New Delhi)
 - Passed BCA / Bachelor Degree in Computer Science Engineering or equivalent Degree **OR** Passed B.Sc. / B.Com. / B.A. with Mathematics at 10+2 level or at Graduation level (with additional bridge Courses as per the concerned University). Obtained at least 50% marks (45% marks in case of candidates belonging to reserved category) in the qualifying Examination.
- **Curriculum for Master of Computer Application (MCA) Programme**

MCA - I (2020 Pattern)

| SEMESTER I (2020 Pattern) | | | | | |
|---------------------------|--------------------------------------|-------------|-----------|------------|------------|
| Sr. No. | Course Title | Course Code | CP | EXT | INT |
| 1. | Java Programming | IT11 | 3 | 50 | 25 |
| 2. | Data Structure and Algorithms | IT12 | 3 | 50 | 25 |
| 3. | Object Oriented Software Engineering | IT13 | 3 | 50 | 25 |
| 4. | Operating System Concepts | IT14 | 3 | 50 | 25 |
| 5. | Network Technologies | IT14 | 3 | 50 | 25 |
| 6. | Open Object 1 | OS11 | 1 | - | 25 |
| 7. | Open Object 2 | OS12 | 1 | - | 25 |
| *Practicals | | | | | |
| 8. | Practical | IT11L | 5 | 50 | 75 |
| 9. | Mini Project | ITC11 | 5 | 50 | 75 |
| Soft Skills | | | | | |
| 10. | Soft Skills - I | SS11 | 1 | - | 25 |
| | | | 28 | 350 | 350 |

| SEMESTER II (2020 Pattern) | | | | | |
|----------------------------|--------------------------------|-------------|-----------|------------|------------|
| Sr. No. | Course Title | Course Code | CP | EXT | INT |
| 1. | Python Programming | IT21 | 3 | 50 | 25 |
| 2. | Software Project Management | IT22 | 3 | 50 | 25 |
| 3. | Optimization Techniques | MT21 | 3 | 50 | 25 |
| 4. | Advanced Internet Technologies | IT23 | 3 | 50 | 25 |
| 5. | Advanced DBMS | IT24 | 3 | 50 | 25 |
| 6. | Open Subject 3 | OS21 | 1 | - | 25 |
| 7. | Open Subject 4 | OS22 | 1 | - | 25 |
| *Practicals | | | | | |
| 8. | Practical | IT21L | 5 | 50 | 75 |
| 9. | Mini Project | ITC21 | 5 | 50 | 75 |
| Soft Skill | | | | | |
| 10. | Soft Skills - II | SS21 | 1 | - | 25 |
| | | | 28 | 350 | 350 |

MCA - II (2020 Pattern)

| SEMESTER III (2020 Pattern) | | | | | |
|-----------------------------|---|-------------|-----------|------------|------------|
| Sr. No. | Course Title | Course Code | CP | EXT | INT |
| 1. | Mobile Application Development | IT31 | 3 | 50 | 25 |
| 2. | Data Warehousing & Data Mining | IT32 | 3 | 50 | 25 |
| 3. | Software Testing & Quality Assurance | IT33 | 3 | 50 | 25 |
| 4. | Knowledge Representation & Artificial Intelligence - ML, DL | IT 34 | 3 | 50 | 25 |
| 5. | Cloud Computing | IT35 | 3 | 50 | 25 |
| 6. | Open Subject 5 | OS31 | 1 | - | 25 |
| 7. | Open Subject 6 | OS32 | 1 | - | 25 |
| *Practicals | | | | | |
| 8. | Practical | IT31L | 5 | 50 | 75 |
| 9. | Mini Project | ITC31 | 5 | 50 | 75 |
| Soft Skills | | | | | |
| 10 | Soft Skills - III | SS31 | 1 | - | 25 |
| | | | 28 | 350 | 350 |

| SEMESTER IV (2020 Pattern) | | | | | |
|----------------------------|--------------|-------------|-----------|------------|------------|
| Sr. No. | Course Title | Course Code | CP | EXT | INT |
| 1. | DevOps | IT41 | 3 | 50 | 25 |
| 2. | PPM and OB | BM41 | 3 | 50 | 25 |
| 3. | Project | ITC41 | 22 | 250 | 300 |
| | | | 28 | 350 | 350 |

*Departmental Subject

CP : Credit Points Ext. : External Subject Int. : Internal Subject

ADMISSION QUOTA

For MBA & MCA admissions are centralized and are conducted through Centralized Allotment Process of Government of Maharashtra. Our Institute being a minority institution certain number of seats are reserved for Christian and other minority students. Also some seats are filled from the Institutional quota as per Govt. rules.

FEES

FEES STRUCTURE FOR THE ACADEMIC YEAR 2023-24

| Course | Tuition Fees Rs. | Development Fees Rs. | Other Fees Rs. (University Sharing & Non Sharing) | Cautious Money Deposit Rs. (Refundable) | Total Fees Rs. |
|-----------------|------------------|----------------------|---|---|----------------|
| MBA - I | 1,08,696 | 16,304 | 2,500 | 2,500 | 1,30,000 |
| MBA - II | 1,08,696 | 16,304 | 2,500 | -- | 1,27,500 |
| MCA - I | 76,522 | 11,478 | 2,500 | 2,500 | 93,000 |
| MCA - II | 76,522 | 11,478 | 2,500 | -- | 90,500 |

HOSTEL FEES STRUCTURE FOR THE ACADEMIC YEAR 2023-24

| Sr. No. | Hostel Type | New / Old | Capacity | Hostel Fees Rs. | Refundable Deposit Rs. (for new admissions only) | Total Fees Rs. |
|---------|---------------|-----------|----------------|-----------------|--|----------------|
| 1. | Gents Hostel | New | Triple Sharing | 20,000 | 2,000 | 22,000 |
| 2. | Ladies Hostel | New | Triple Sharing | 20,000 | 2,000 | 22,000 |
| 3. | Ladies Hostel | Old | Triple Sharing | 16,000 | 2,000 | 18,000 |

RULES & REGULATIONS

A) ADMISSION & FEES

- i) Admission to all the courses will be given as per S. P. Pune University & Govt. of Maharashtra rules.
- ii) After commencement of the academic year, if any change is made in the fees by the Fees Regulating Authority OR Savitribai Phule Pune University it is obligatory for all the students to pay the revised fees.
- iii) Admission of the student will remain provisional at the cost and risk of student till the required documents for eligibility are submitted.
- iv) Tuition fees and other fees will be charged as per Fees Regulating Authority and Savitribai Phule Pune University Rules. The students should note that once admitted he/she will have to pay fees for the entire course irrespective of his/her leaving the Institute any time during the course. No transfer certificate will be issued to him / her unless the dues for all the years are cleared by him / her.

B) CANCELLATION OF ADMISSION AND REFUND OF FEES

(For all types of Seats)

- a) The candidate shall apply online for cancellation and submit signed copy of system generated application for cancellation to the Institute.
- b) After receiving admission cancellation request from the Candidate, the Institution shall cancel the admission immediately and generate online acknowledgment of cancellation of admission through Institute login and issue a signed copy to Candidate.
- c) The refund of fees before cut-off date of admission shall be made within two days i.e. total fee minus the processing charges of Rs. 1,000/-, or refund rule shall be as per the guideline of appropriate authorities or the State Government, as the case may be.

If the admission is cancelled after the cut-off date of admission declared by the Competent Authority, there shall be no refund except the Security Deposit and Caution Money Deposit.

C) GENERAL RULES

1. Students joining the Institute are required to abide by all the rules and regulations that may be issued by the Institute's authorities from time to time.
2. Students shall do nothing either inside or outside the premises of the Institute that will, in anyway, affect the Institute's orderly administration and discipline.
3. Attendance is compulsory for all classroom and online teaching including tutorials, seminars, guest lectures etc. and all the tests and examinations as per the Institute's time table. Continuous irregularity with regard to the above said will lead to strict disciplinary action.
4. Students in their own interest must read the notices and rules placed on the Notice Boards / IMS Website / forwarded on Whatsapp & Telegram Group from time to time.

5. Any damage done to the property of the Institute by a student will have to be made good by the student concerned.
6. If for any reason, the continuation of a student in the institute, in the opinion of the Director is detrimental to the best interests or discipline of the Institute, such a student will be expelled. The decision of the Director shall be final and binding.
7. Students must carry their identity cards while they are in the premises of the Institute and must produce it if demanded by the Institute's authority.
8. The decision of the Director shall be final with regard to any change, omission or addition of the aforesaid rules and regulations.
9. The anti ragging rules of State Govt. of Maharashtra are applicable at Institute Campus & Hostels.
10. Pattern of Communication : Communication with the students will be through Notice Board or E-mail or SMS or Electronic Screen.
11. Attendance : A student of the Institute will have to his/her credit a minimum of 75% attendance in all courses. If the attendance is less, a student will not be considered as eligible for examination through the Institute. He/She may be withheld from appearing in internal exams conducted by the Institute.
12. Internal and External Backlog Examination : Students are responsible to see the Notice Board for Internal and External backlog Examinations schedule.

STUDENT'S CHARTER

STUDENT'S RIGHTS

1. Every student has a right to equitable treatment by the Institute.
2. Students have the right to make, without fear of reprisal, a complaint to the Director.
3. Every Student has the right to be free from harassment of all types.
4. Every student has the right to join & take part in the duly authorised activities of the Institute.
5. Student have the right to use facilities designed by the institute as available for student use & will be deemed to agree to abide by any regulations of the institute in regard to such use.
6. Every student has the right to quality education.
7. Students have the right to know what is expected with regard to class attendance & punctuality.
8. Students have the right to have adequate information of any proposed programme changes.
9. Students have the right to be given at least one week's notice for major tests /assignments.

STUDENT'S RESPONSIBILITIES

1. Institute Identity Card must be carried by the students at all times while on campus.
2. Students are expected to attend all the classes & practicals regularly.
3. Smoking, Tobacco-Chewing, Spitting etc. are strictly prohibited in all parts of the Institute's Campus.

4. Students are expected to take proper care of the Institute property & help in keeping the premises neat clean.
5. Students are responsible members of the Institute community & are fully accountable for their actions in the Institute.
6. Any activity in the Institute involving students requires the prior approval of the Director.
7. Ragging is strictly prohibited.

ANTI RAGGING POLICY

- Ragging is strictly prohibited in the Institute's premises including Hostel, Canteen and Campus. The Institute has 'Zero Tolerance' towards ragging. Students are instructed not to take part or encourage any activity which amounts to ragging.
- Ragging means display of disorderly conduct, doing of any act which causes or is likely to cause physical, psychological harm or raise apprehension or fear or shame or embarrassment to student of any educational Institution and includes :-
 - i) teasing, abusing, threatening or playing practical jokes, or causing hurt to, such student; **OR**
 - ii) asking a student to do any or perform something which such student will not, in the ordinary course, willingly, do.
- If any accident of ragging comes to the notice of the Institute's authority/Director, the accused student will be given an opportunity to explain and if his/her explanation is not satisfactory the student is liable to be expelled from the Institution.
- Penalty for Ragging : Whosoever directly or indirectly commits, participates in, abets or propagates ragging within or outside any education Institution shall, on conviction be punished with imprisonment for a term which may extend two years and shall also be liable to a fine which may extend to ten thousand rupees.
- Dismissal of Student : Any student convicted of an offence under section 4 shall be dismissed from the educational Institution and such student shall not be admitted in any other educational Institution for a period of five years from the date of order of such dismissal.
- Any incident of ragging should be brought immediately to the notice of the Anti Ragging Committee and the Director.
- Name & Telephone number of contact person in case of any such incident Mr. Pratap Gaikwad (Contact No. 9673 678383 / E-mail : pratap_gaikwad3842@rediffmail.com).
- The Institute is governed by the Maharashtra Prohibition of Ragging Act, 1999 and amendments made subsequently.



Faculty members, Staff & Students taking the 'Pledge of Unity' under 'Unnat Bharat Abhiyan'



Release of IMS - Student's Research Journal 'PRAYAS'



Donation to 'Shelter Homes' on the occasion of 'Christmas Celebration'



Promotion Stalls at - Management Games



IMS Family celebrating 'Founder's Day'



Games at 'IT WAVES'



'Blood Donation Drive' on the occasion of 'Founder's Day'



Librarian Dr. Swati Barnabas receiving 'Best Librarian Award' by S. P. Pune University



'Business Associate Meet'



'Tug of War' - Sports Activities



Industry - Institute Interface Committee Meeting



'Independence Day Celebration'



Entrepreneurs during IMS - SEEDC 'Women Entrepreneurs Expo'



Dignitaries & IMS Family during 'Annual Prize Distribution Ceremony'



Dignitaries & IMS Family during 'Virtual International Conference'

Mementos & Trophies



B-School Library Award



'Most upcoming B-School Award'



'Best Institute Award'
S. P. Pune University



NAAC Accredited Grade A+



PIMSE Trophy



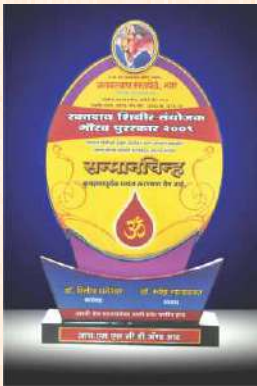
With Compliments from
Dr. A. P. J. Abdul Kalam
President of the Republic of India



'Best Management
Institute Award'



Trophy from Deshdoot
Newspaper



Trophy from Jankalyan
Blood Bank



'Award for Leadership in
IT Education'



Memento from
TATA Consultancy Services



Trophy from
Sakal Newspaper



Avishkar - 2003



Trophy from Alliance Club



'Best Employee Award'



Trophy from
Sakal Newspaper

B. P. H. E. Society's Motto

*“Not things but men
I dare you!”*



**NAAC Re-accredited Grade A+ Institute
'Best Institute Award' by S. P. Pune University**

-  **'IMS CAMPUS'**
Station Road, Ahmednagar - 414 001. (M.S.)
-  : (0241) 2346532, 2324830
-  : imscdr_anr@bsnl.in
-  : www.imscdr.ac.in